

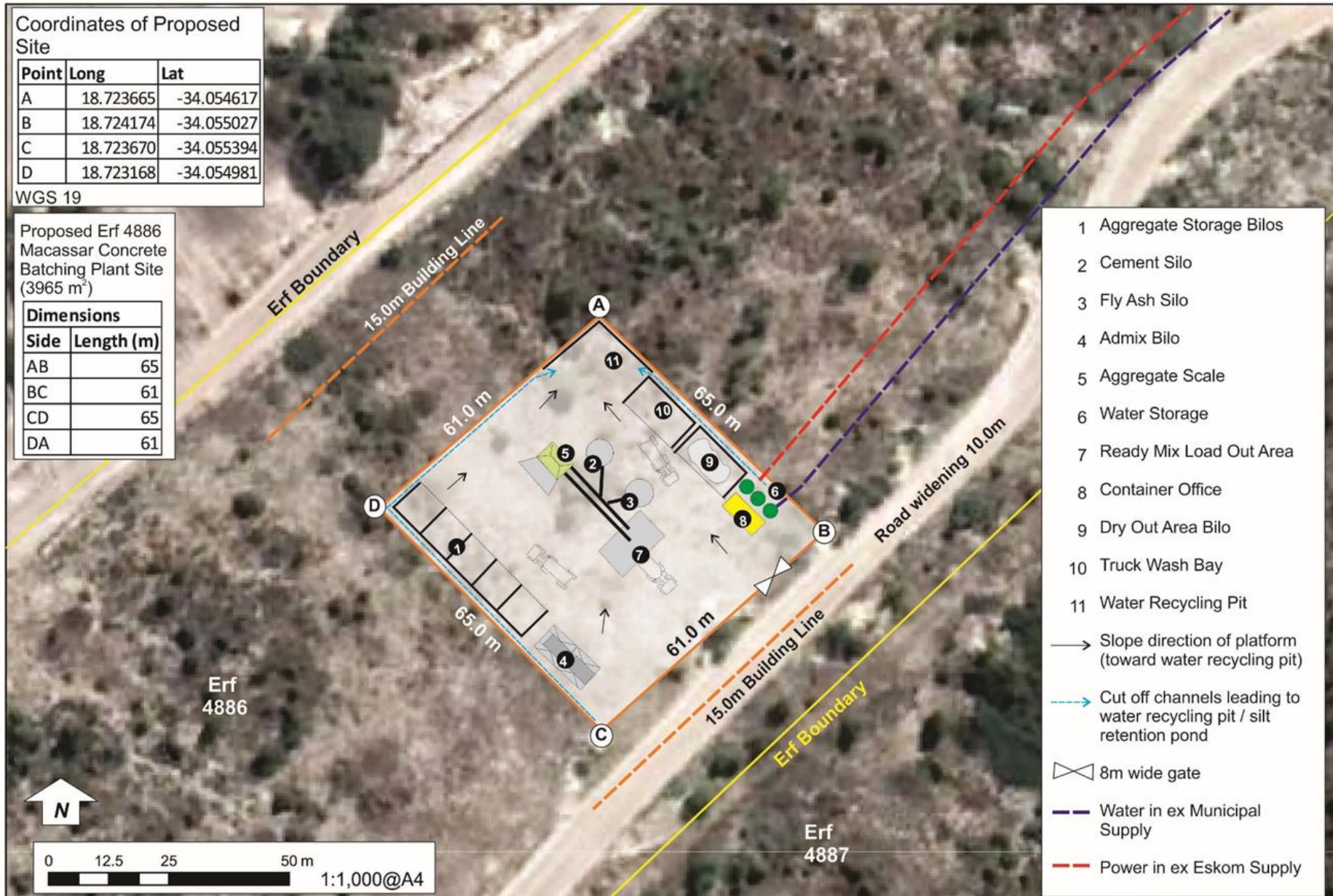
Coordinates of Proposed Site

Point	Long	Lat
A	18.723665	-34.054617
B	18.724174	-34.055027
C	18.723670	-34.055394
D	18.723168	-34.054981

WGS 19

Proposed Erf 4886
Macassar Concrete
Batching Plant Site
(3965 m²)

Dimensions	
Side	Length (m)
AB	65
BC	61
CD	65
DA	61



- 1 Aggregate Storage Bilos
- 2 Cement Silo
- 3 Fly Ash Silo
- 4 Admix Bilos
- 5 Aggregate Scale
- 6 Water Storage
- 7 Ready Mix Load Out Area
- 8 Container Office
- 9 Dry Out Area Bilos
- 10 Truck Wash Bay
- 11 Water Recycling Pit
- Slope direction of platform (toward water recycling pit)
- Cut off channels leading to water recycling pit / silt retention pond
- ⊗ 8m wide gate
- Water in ex Municipal Supply
- Power in ex Eskom Supply

Erf 4886

Erf 4887

