



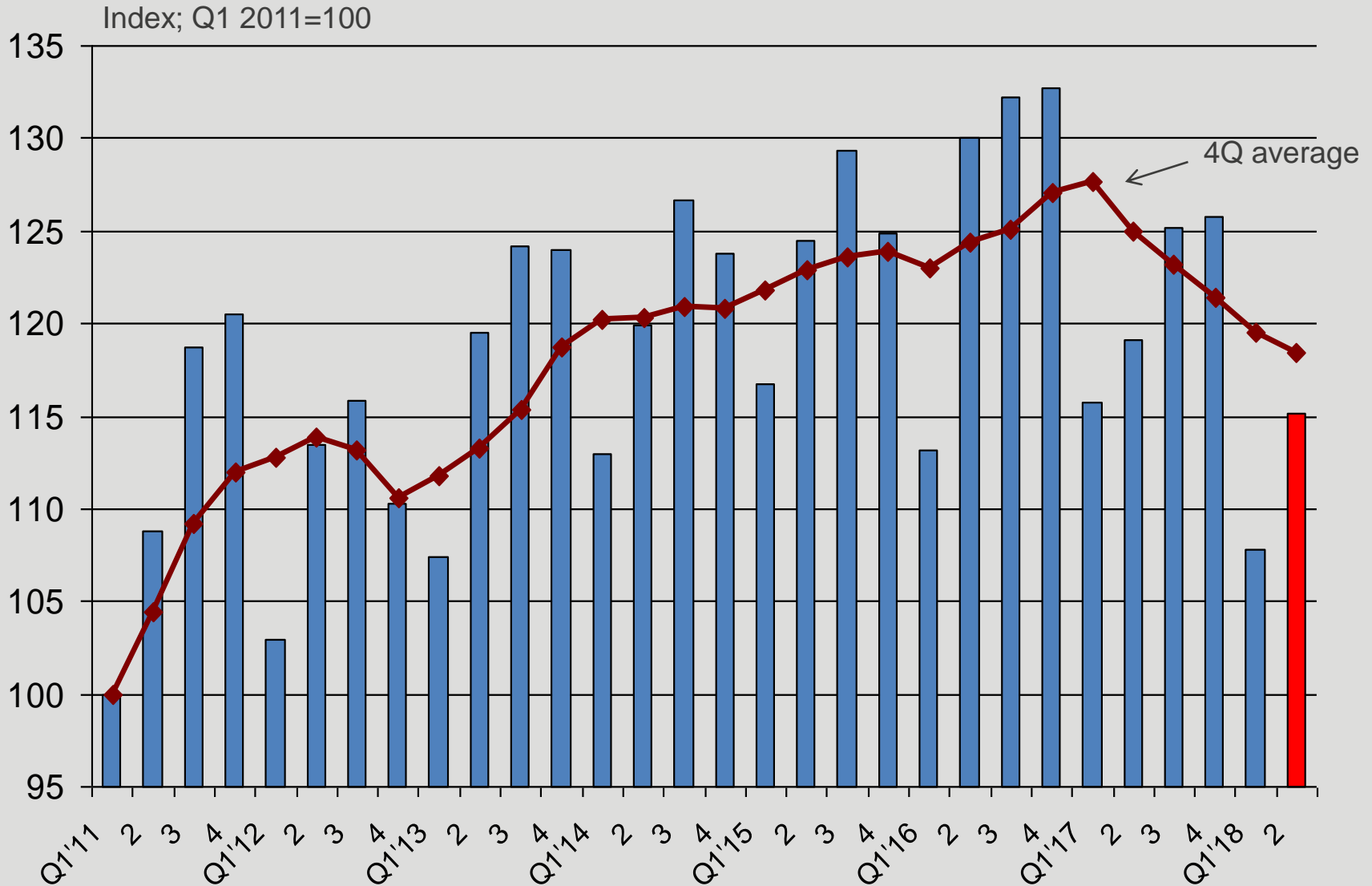
AFRIMAT[®]

**CONSISTENTLY
DELIVERING**

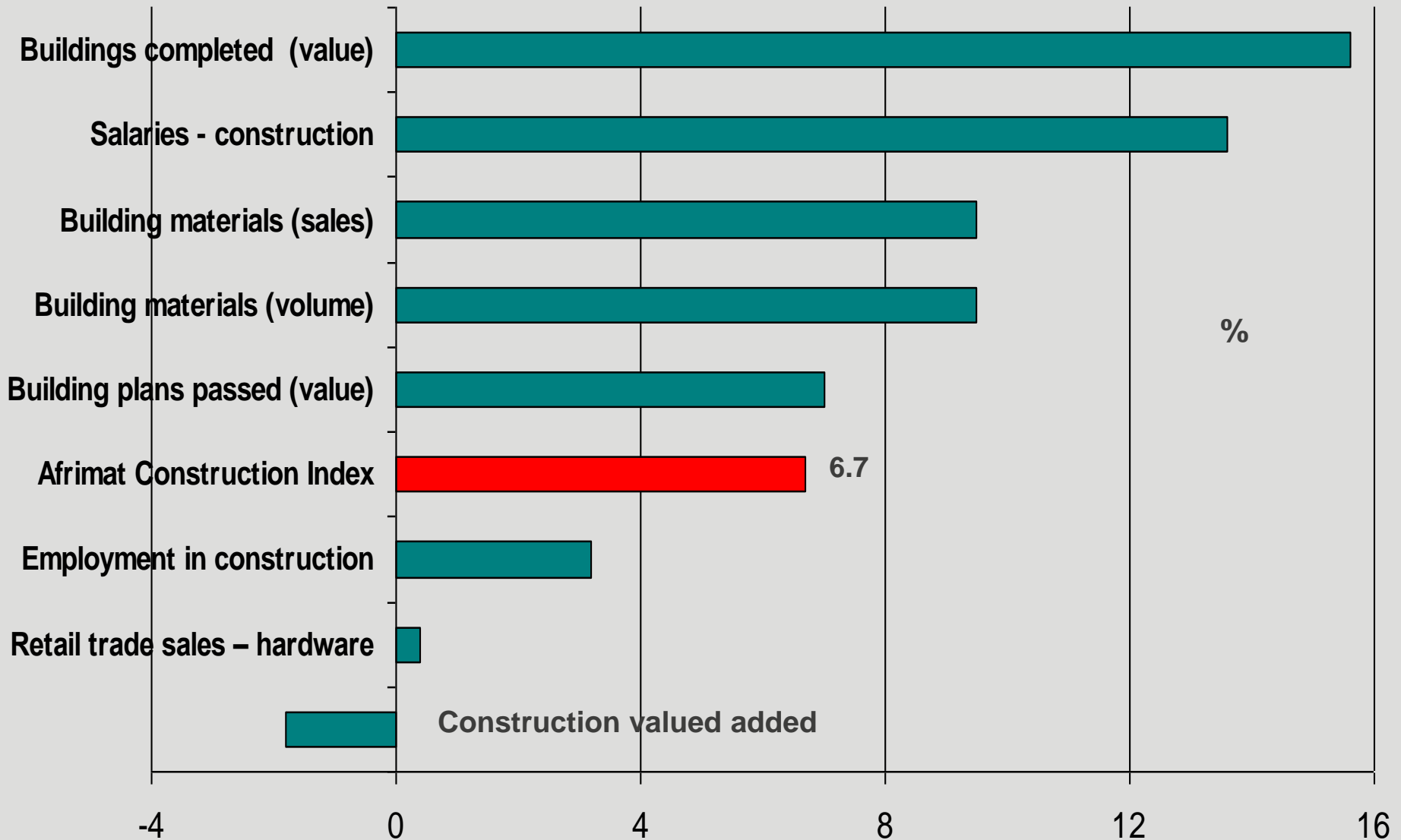
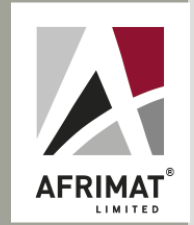
Afrimat | Dr Roelof Botha
Construction | 2nd quarter
Index | 2018

Afrimat Construction Index (ACI)

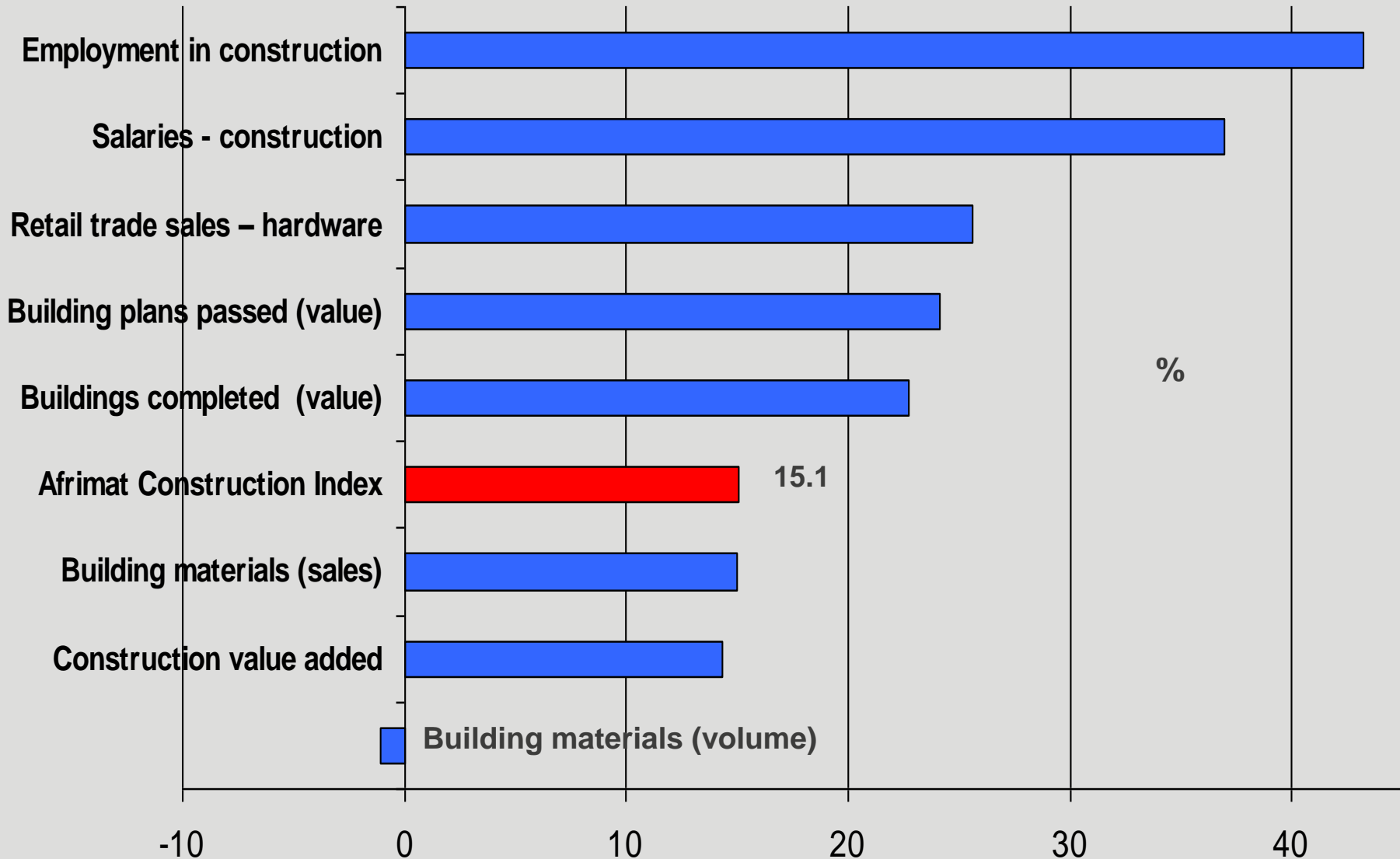
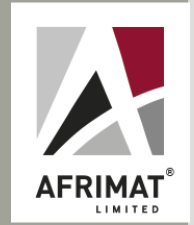
2nd quarter 2018 (increase of 6.7% over 1st quarter)



% change in the ACI sub-indices Q1 2018 to Q2 2018

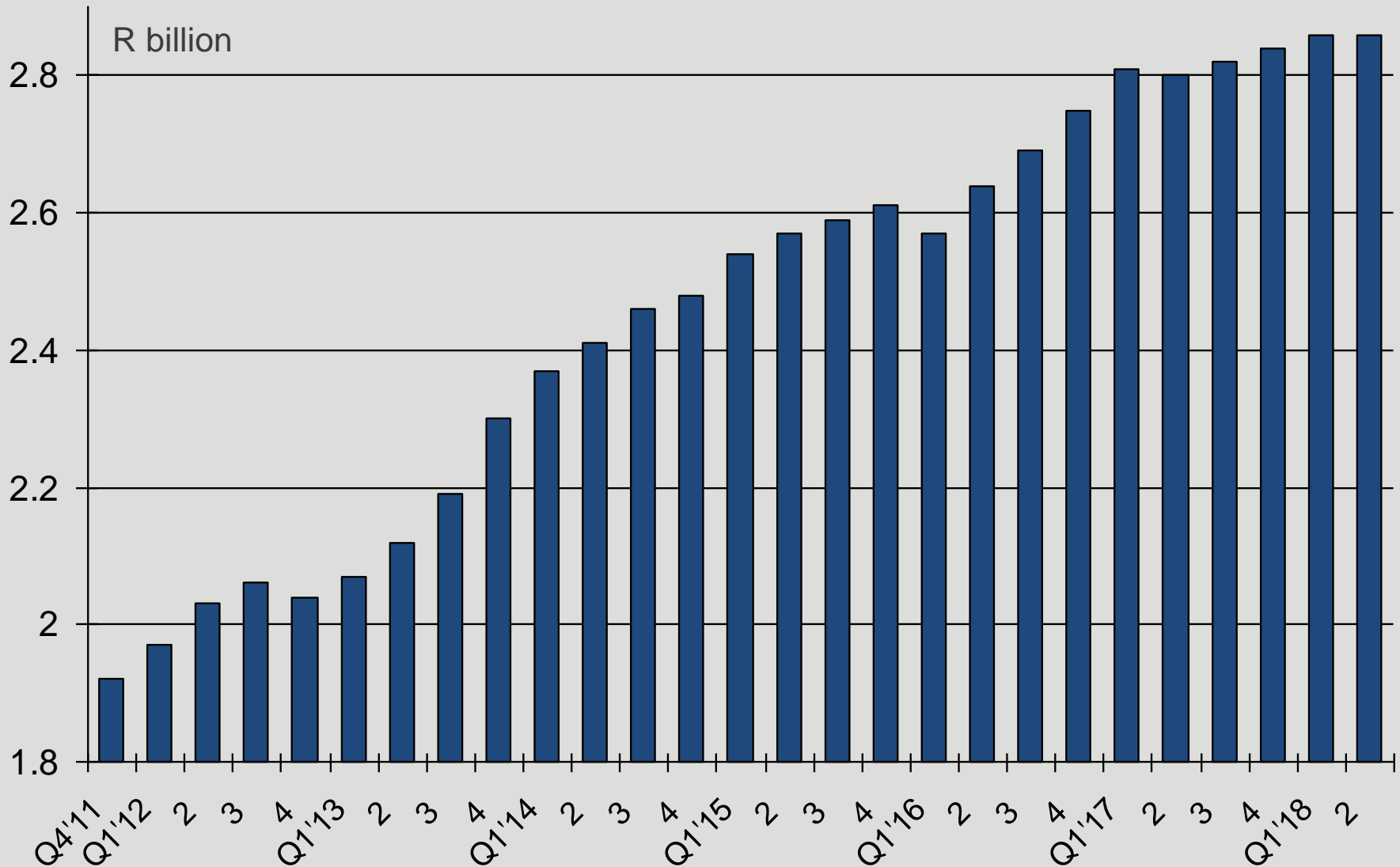
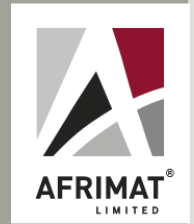


% change in the ACI sub-indices since the base period (Q1 2011 to Q2 2018)



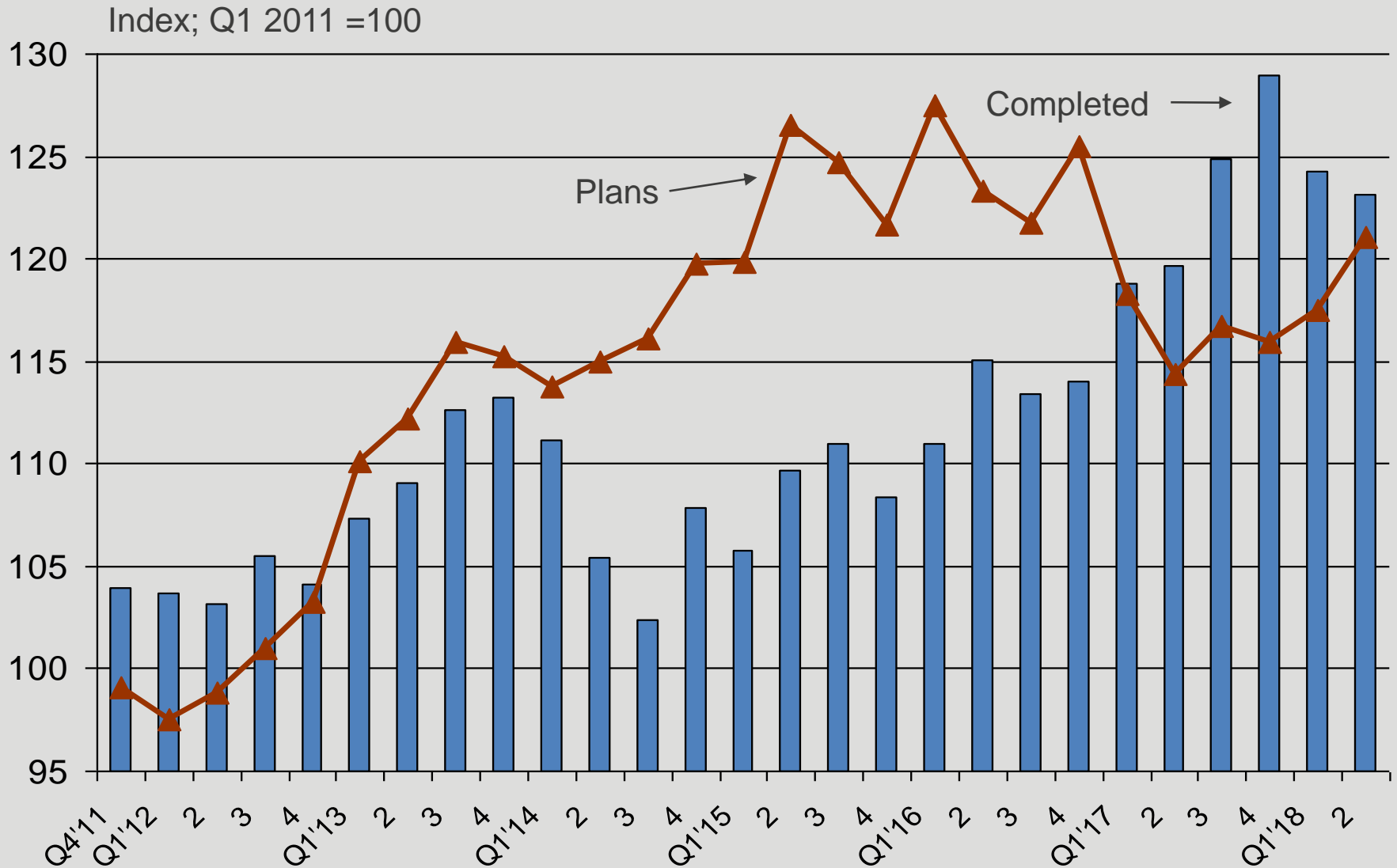
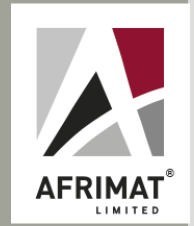
Quarterly sales values – building materials (at current prices)

(Note: 4Q moving avg; Source: Stats SA)

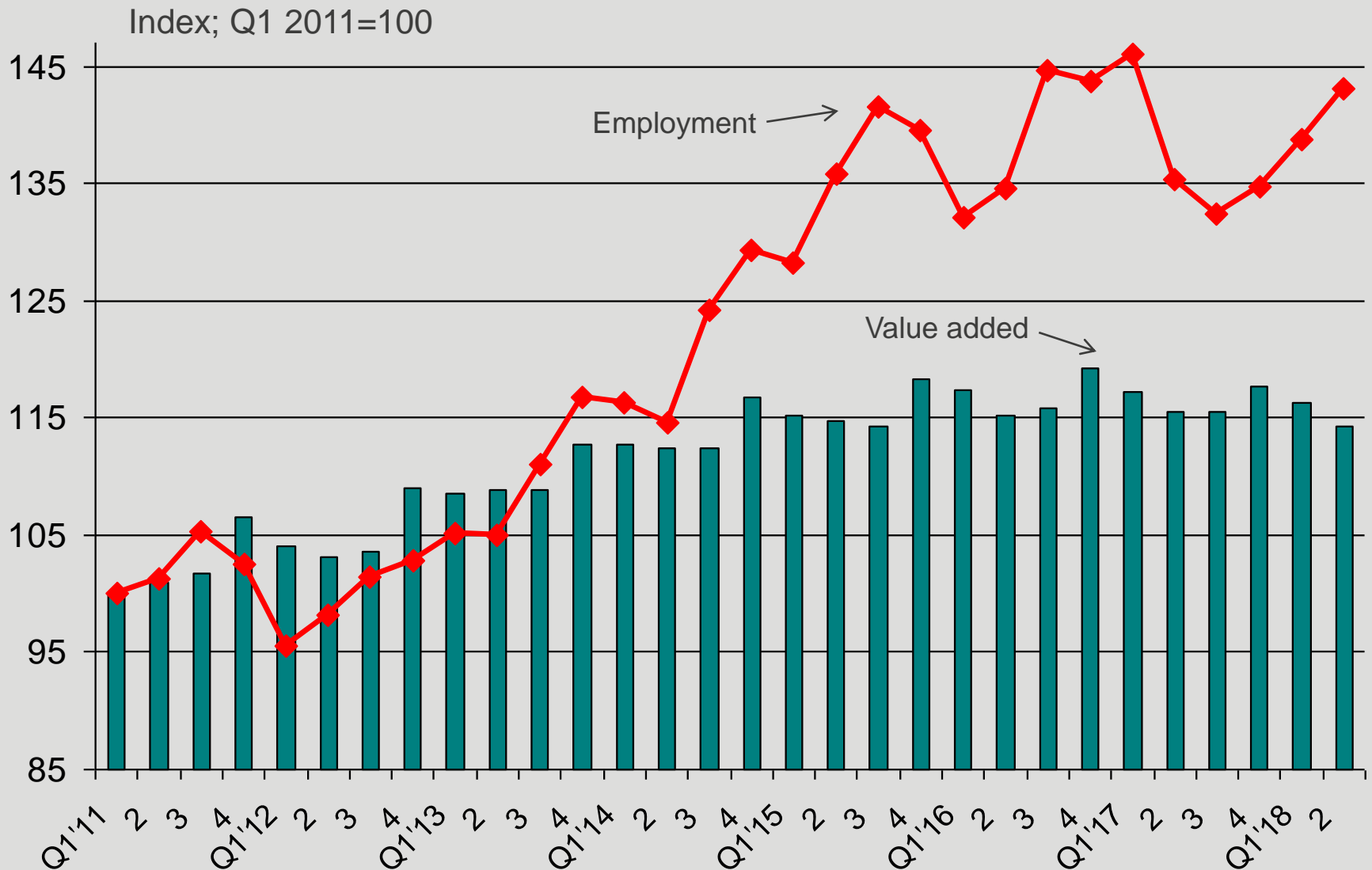


Indices of building plans passed and buildings completed (in real terms)

(Note: 4Q moving avg; Sources: Stats SA; SARB)



Sub-indices for formal employment and value added in construction



Labour remuneration in construction (at constant Q2 2018 prices)

(Note: 4Q moving avg; Source: Stats SA)

