



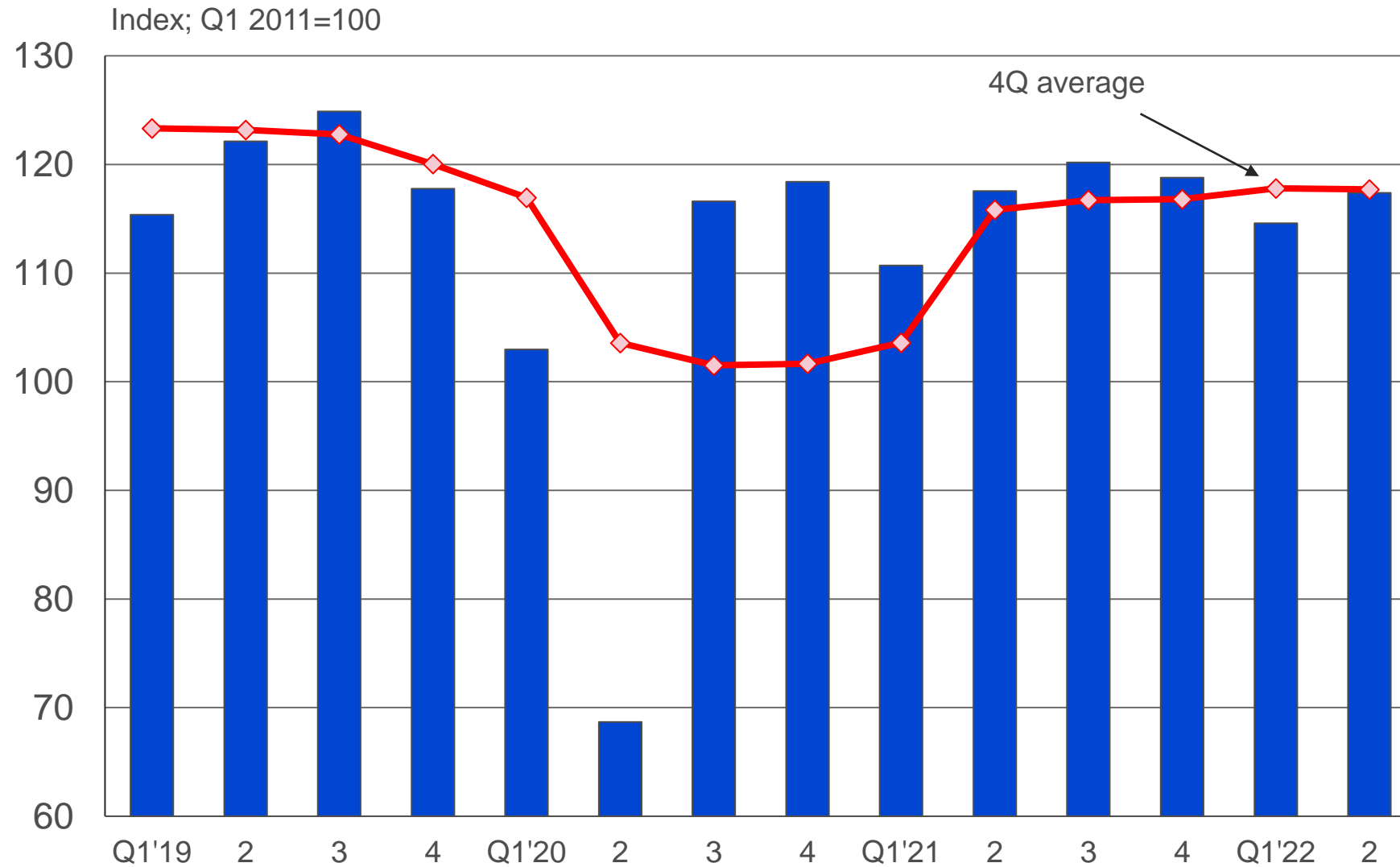
**CONSISTENTLY
DELIVERING**



Afrimat Construction Index

Quarter 2 | 2022
Dr Roelof Botha

Afrimat Construction Index (ACI) – 2nd quarter 2022



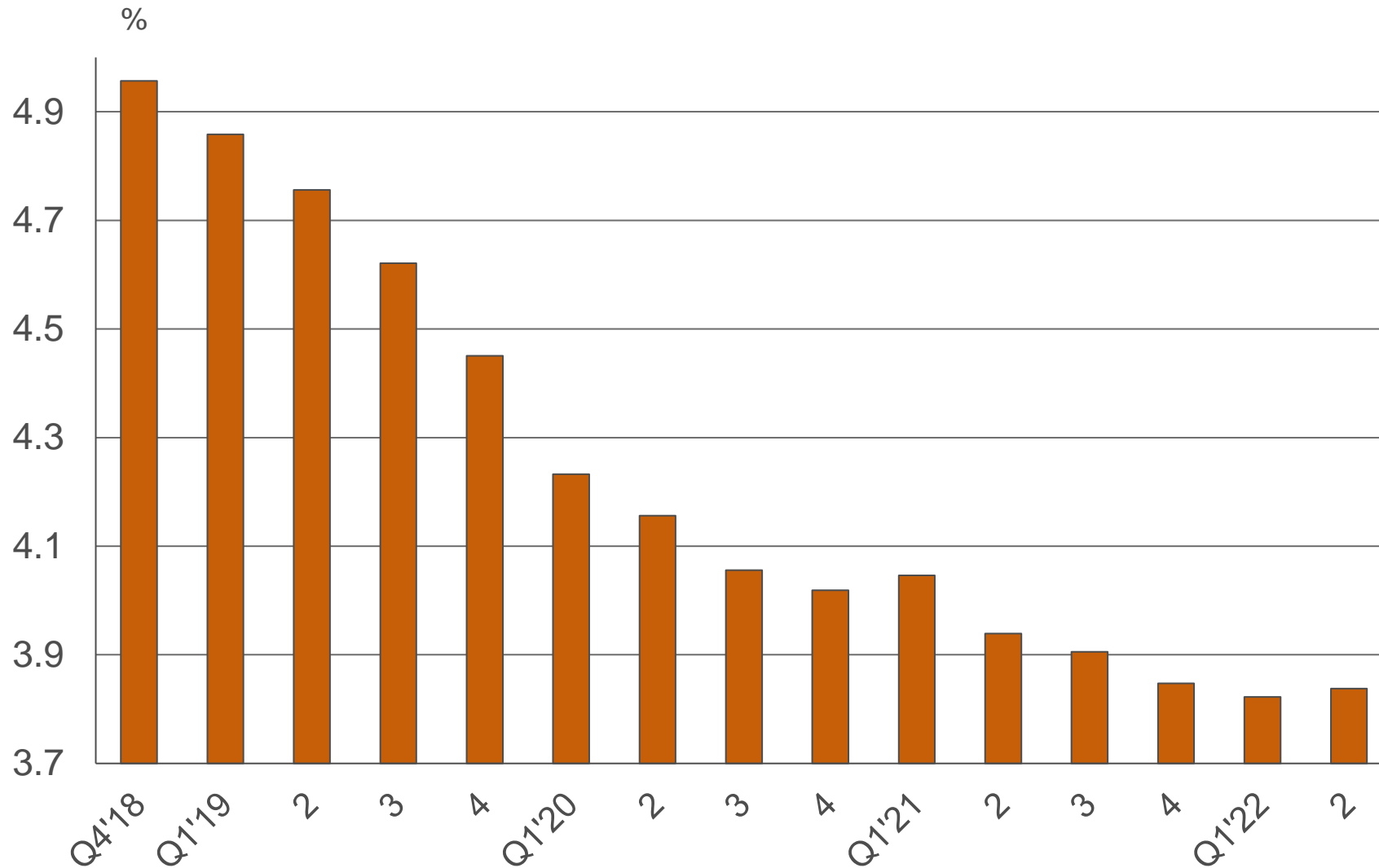
Capital formation by the public sector (constant 2022 prices)

(Sources: Stats SA)



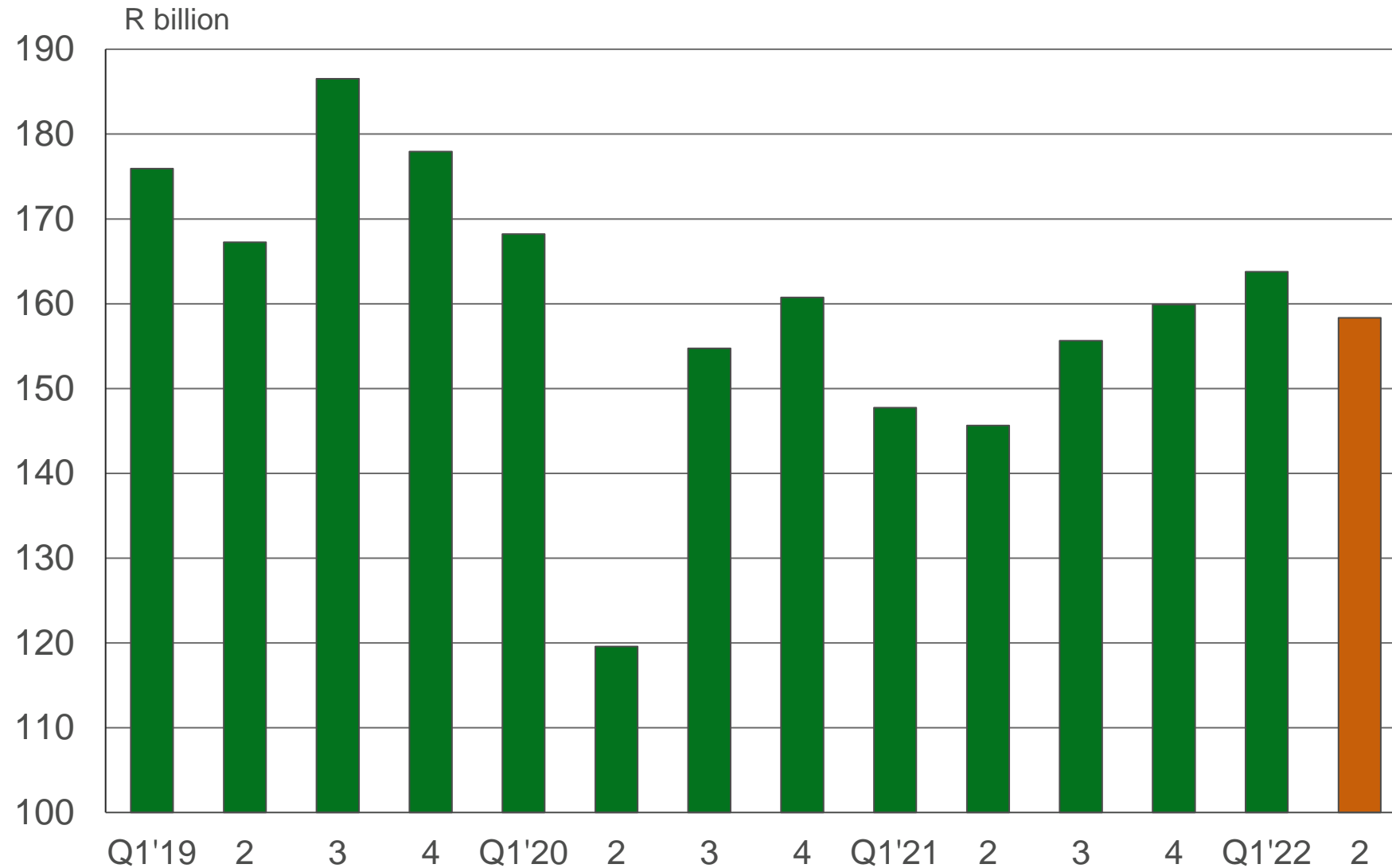
Ratio of public sector capital formation to GDP

(Source: Stats SA)



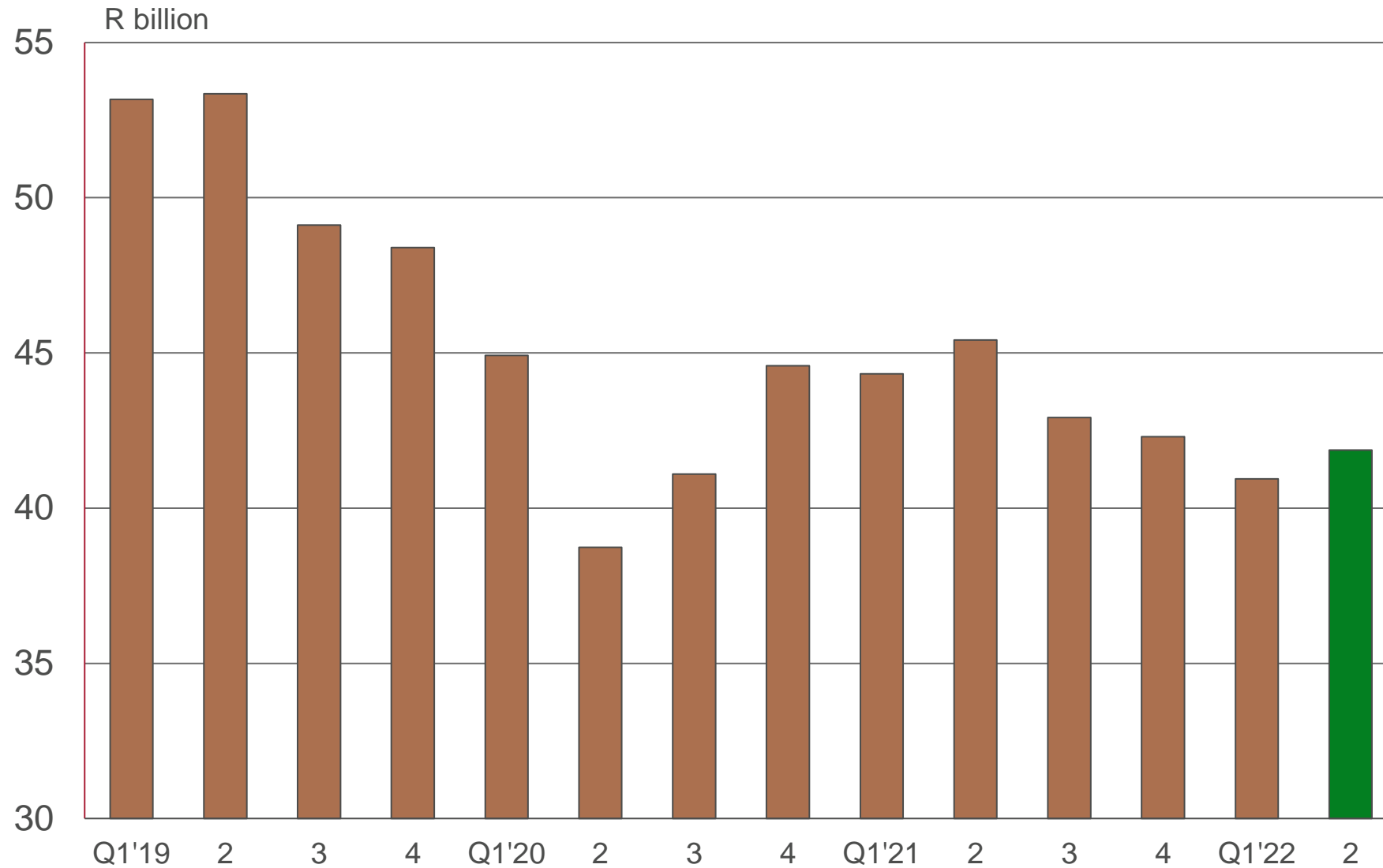
Private sector capital formation at constant 2022 prices

(Source: Stats SA)



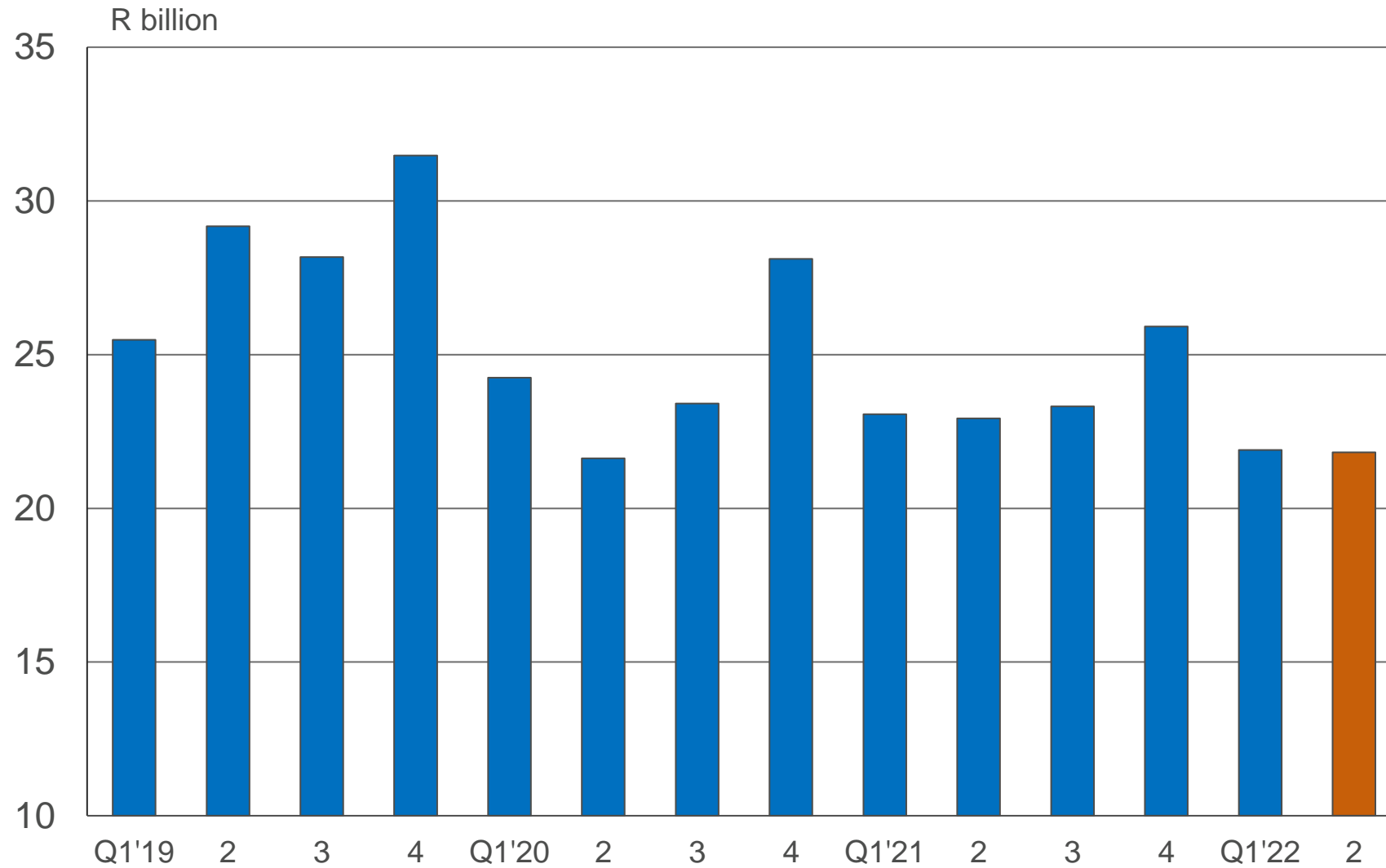
Value of construction works at constant 2022 prices

(Source: Stats SA)



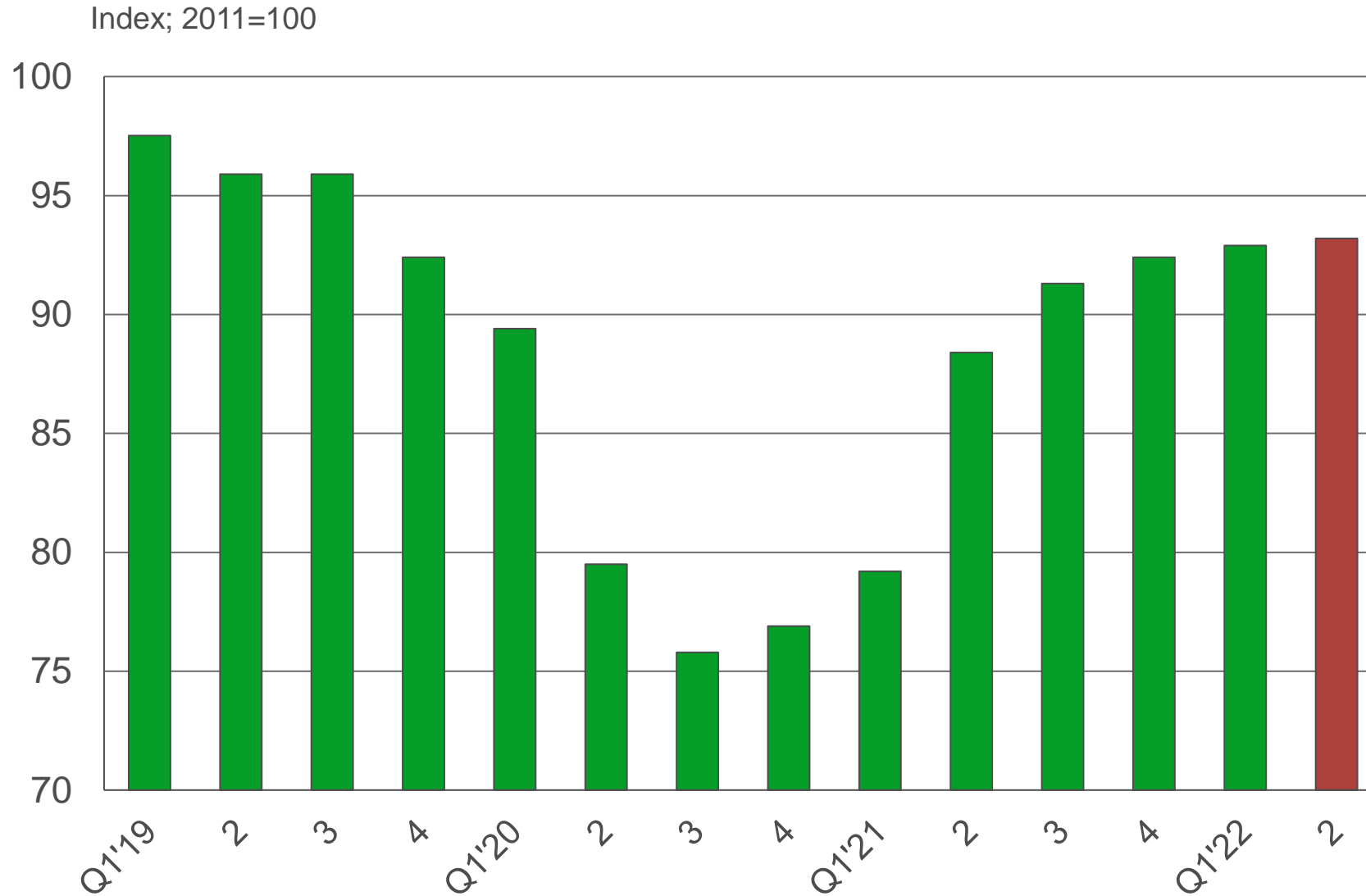
Construction sector salaries & wages at constant 2022 prices

(Source: Stats SA)



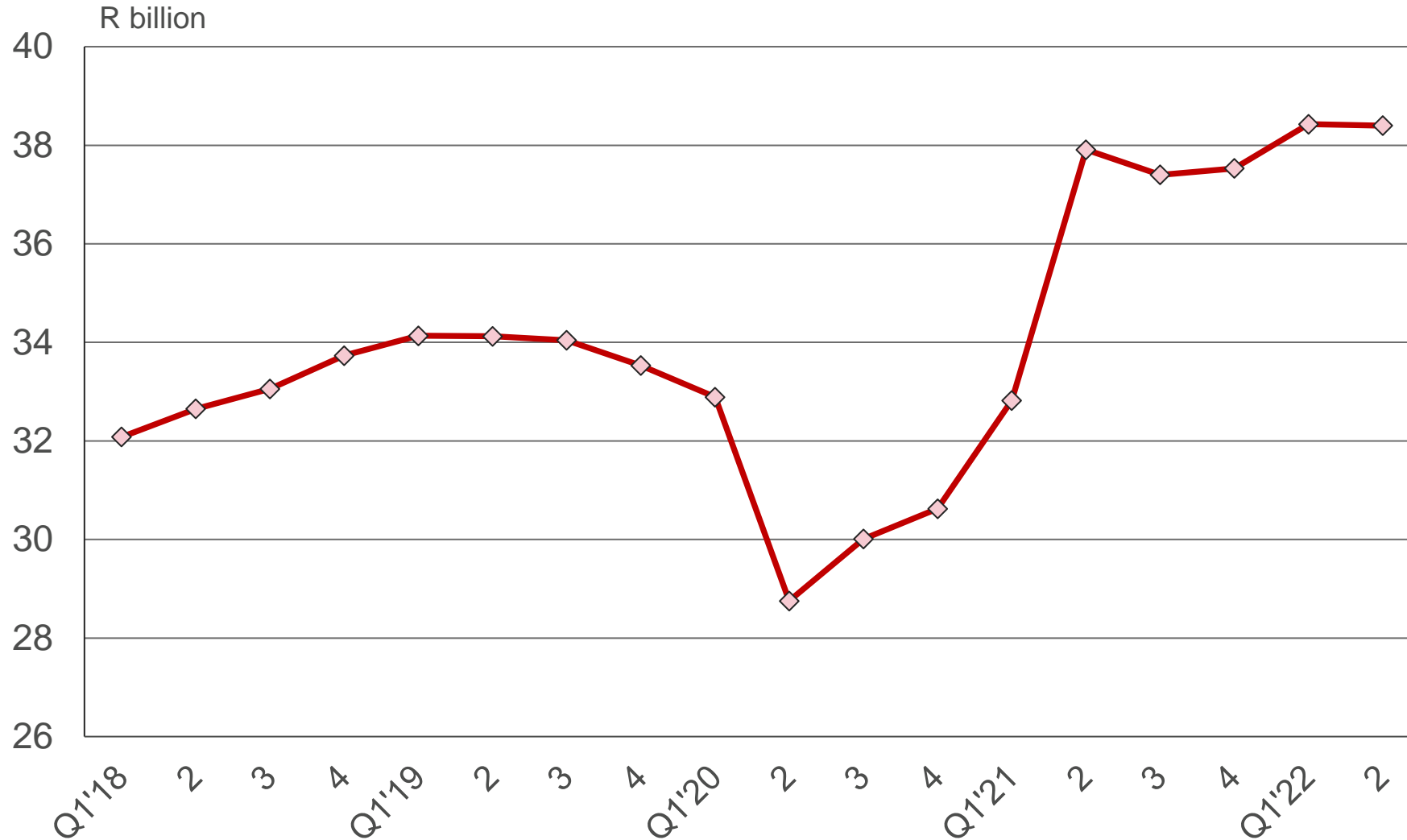
Volume of building materials produced (4Q average)

(Source: Stats SA)



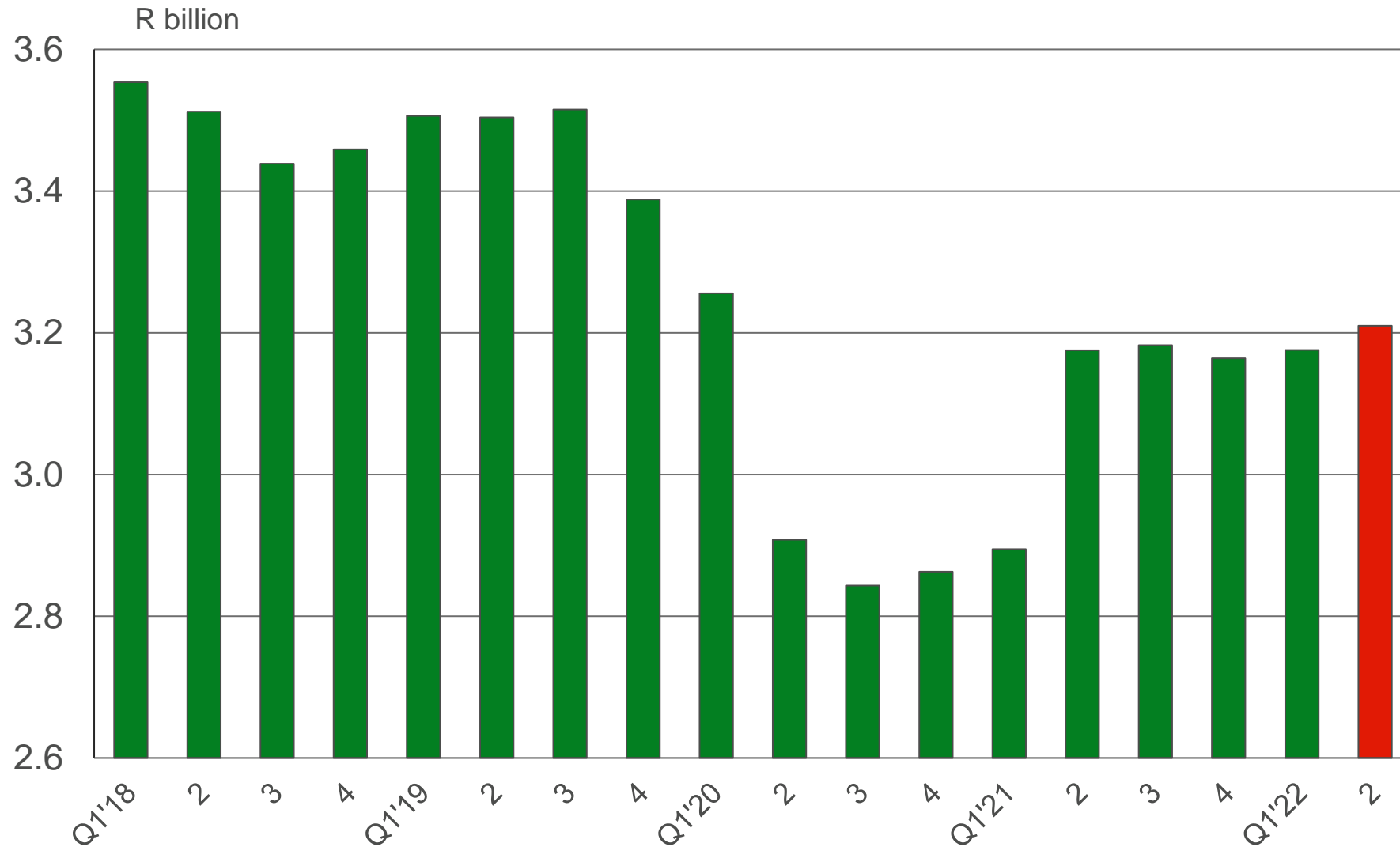
Value of sales of construction materials (wholesale) at constant 2021 prices (4Q average)

(Source: Stats SA)



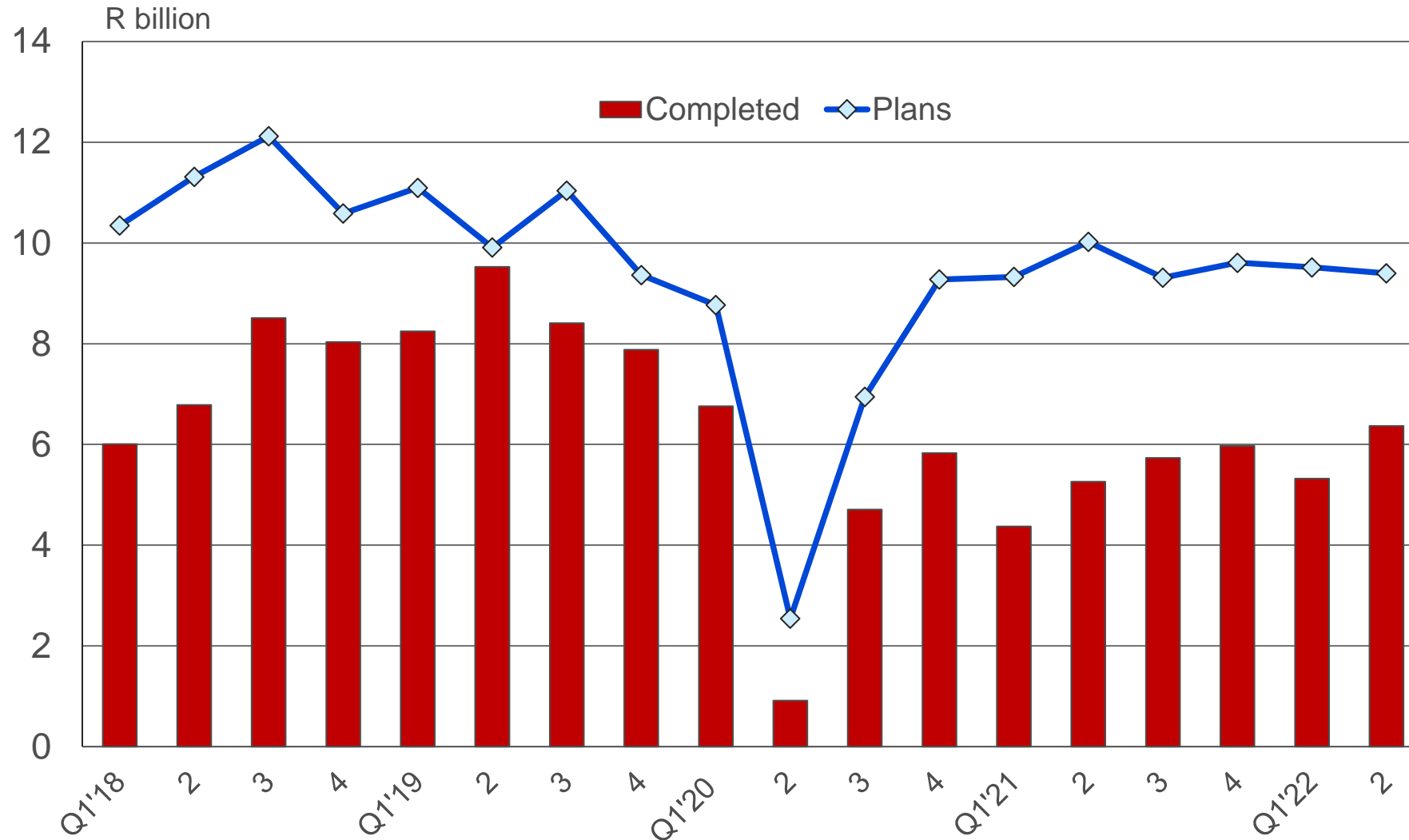
Value of building material sales at constant 2022 prices (4-quarter average)

(Sources: Stats SA; own calculations)



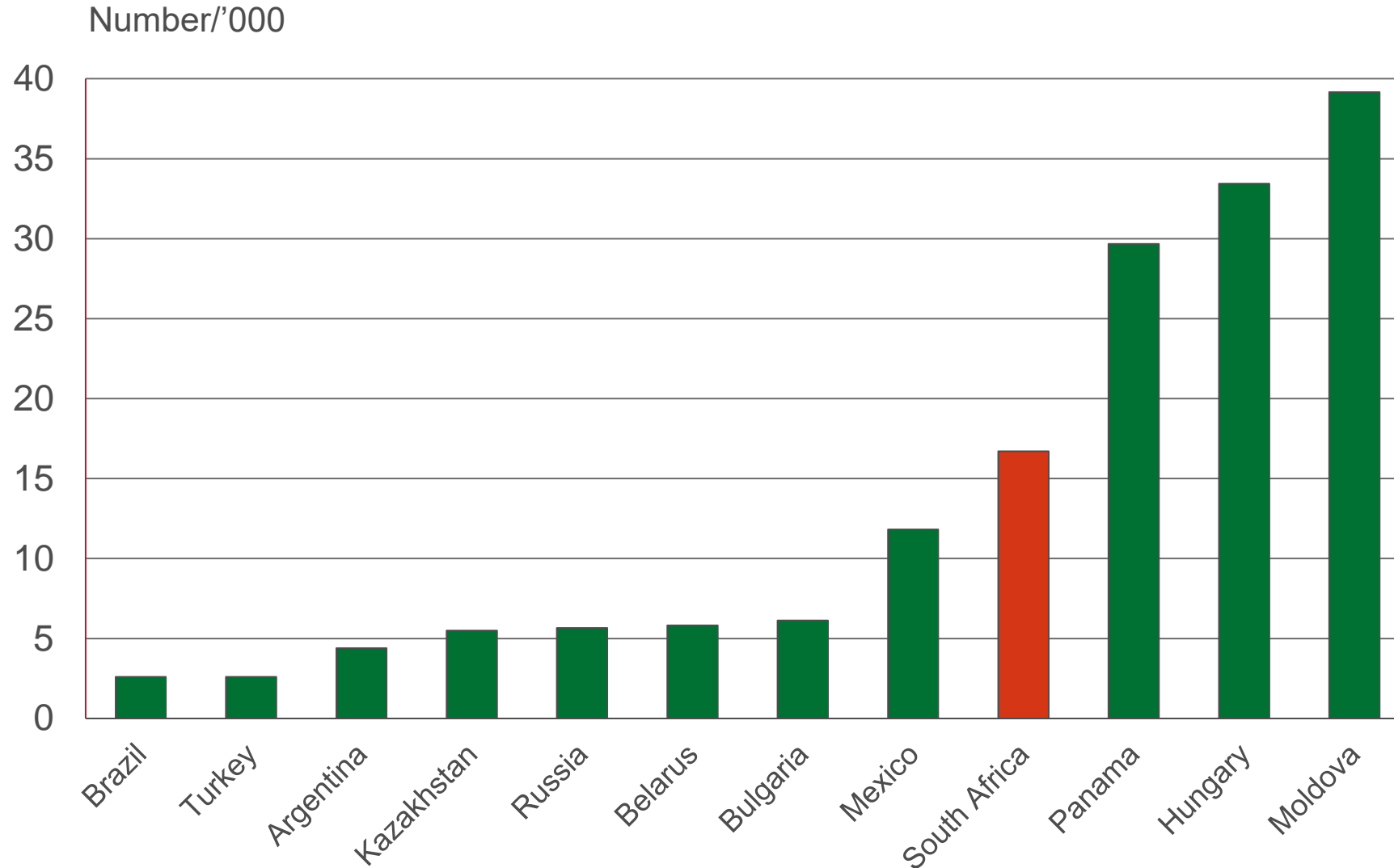
Average monthly value of building plans passed & buildings completed by larger municipalities at constant 2022 prices

(Source: Stats SA)



Public works programmes in emerging markets - number of beneficiaries per '000

(Sources: World Bank; Botha et al -2022)



South Africa's leading business cycle indicator

(Note: Quarterly average; Source: SARB)

