

**CONSISTENTLY
DELIVERING**

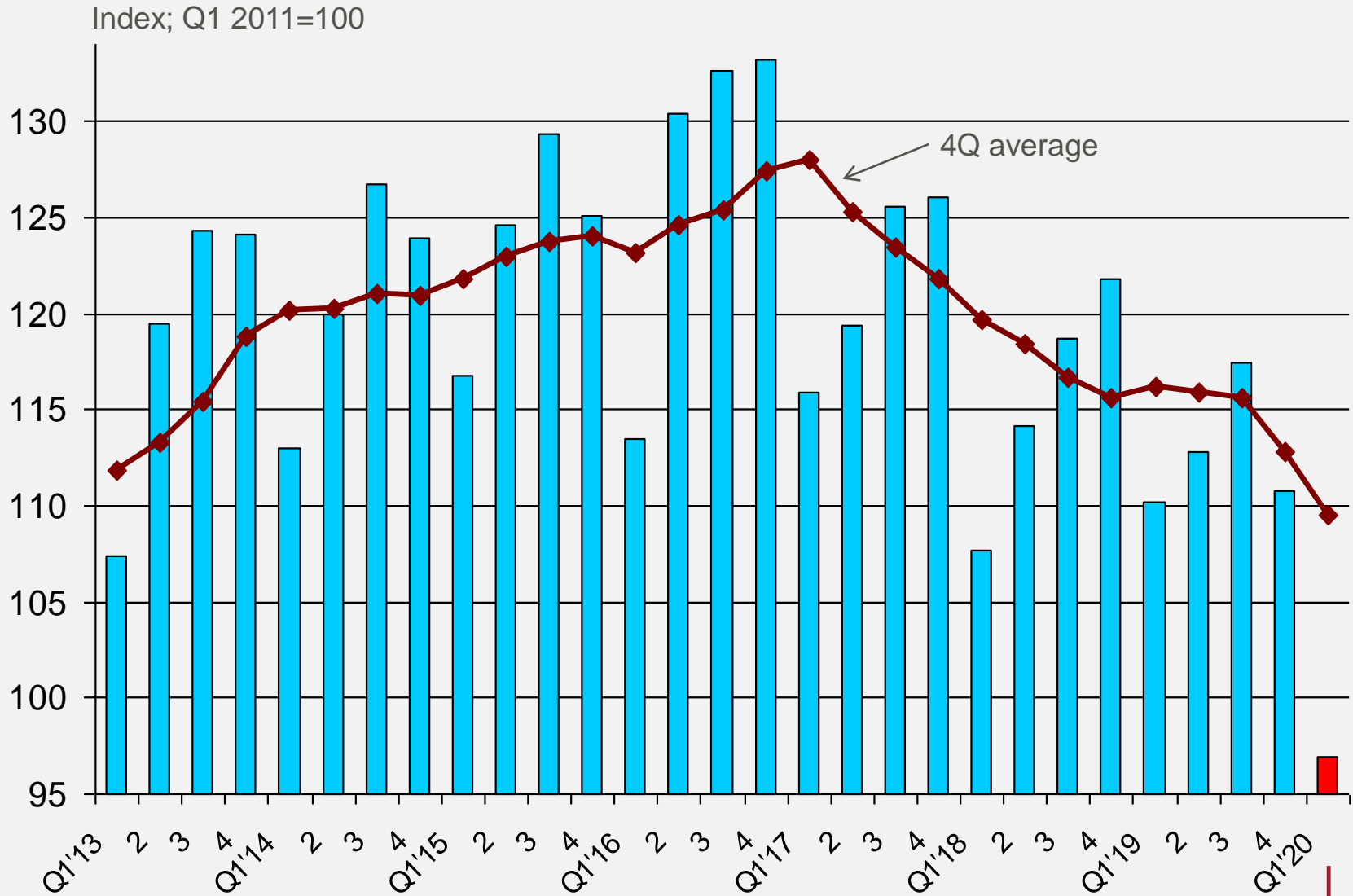


**Afrimat Construction
Index**

Quarter 1 | 2020

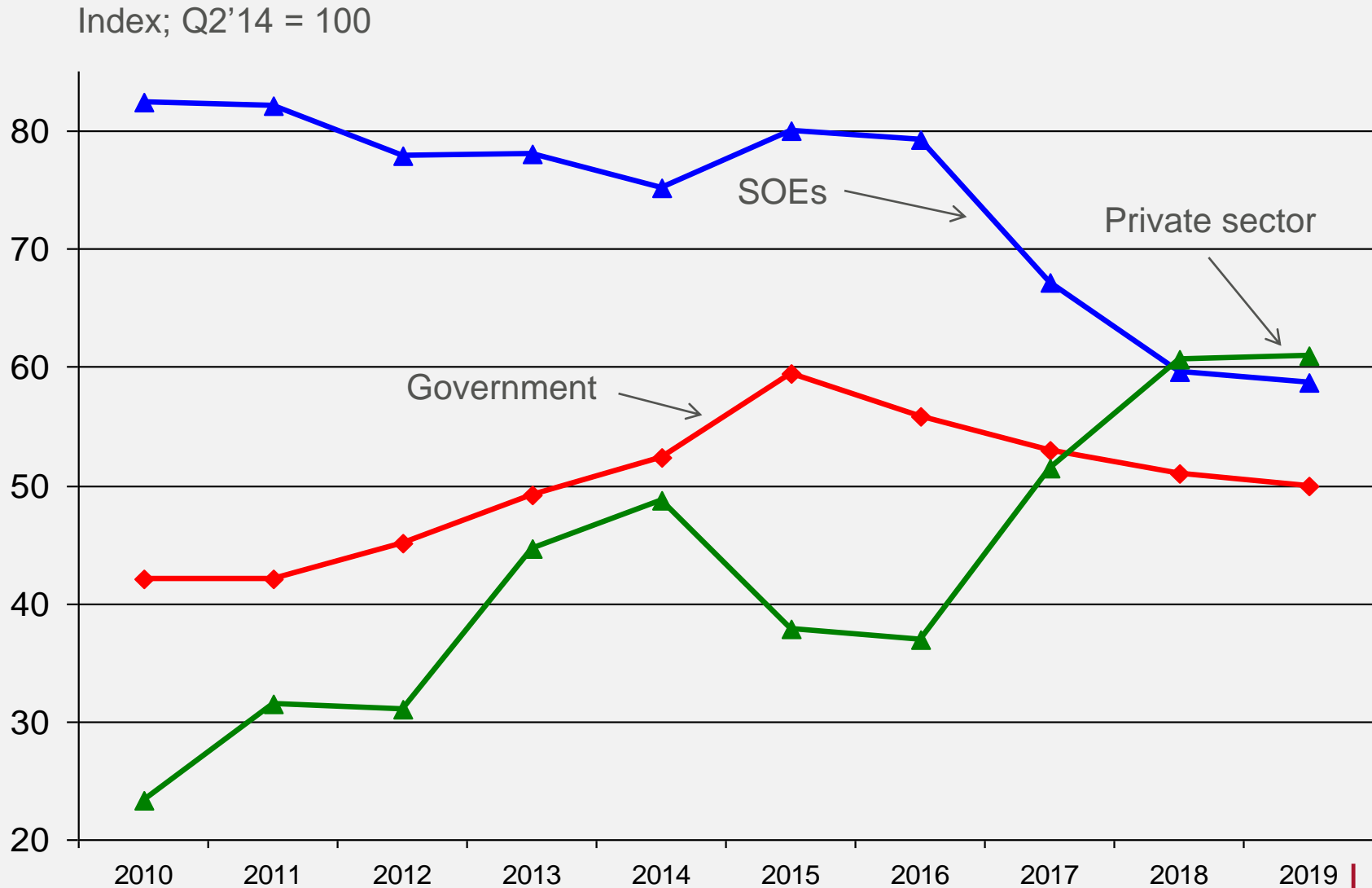
Dr Roelof Botha

Afrimat Construction Index (ACI) 1st quarter 2020

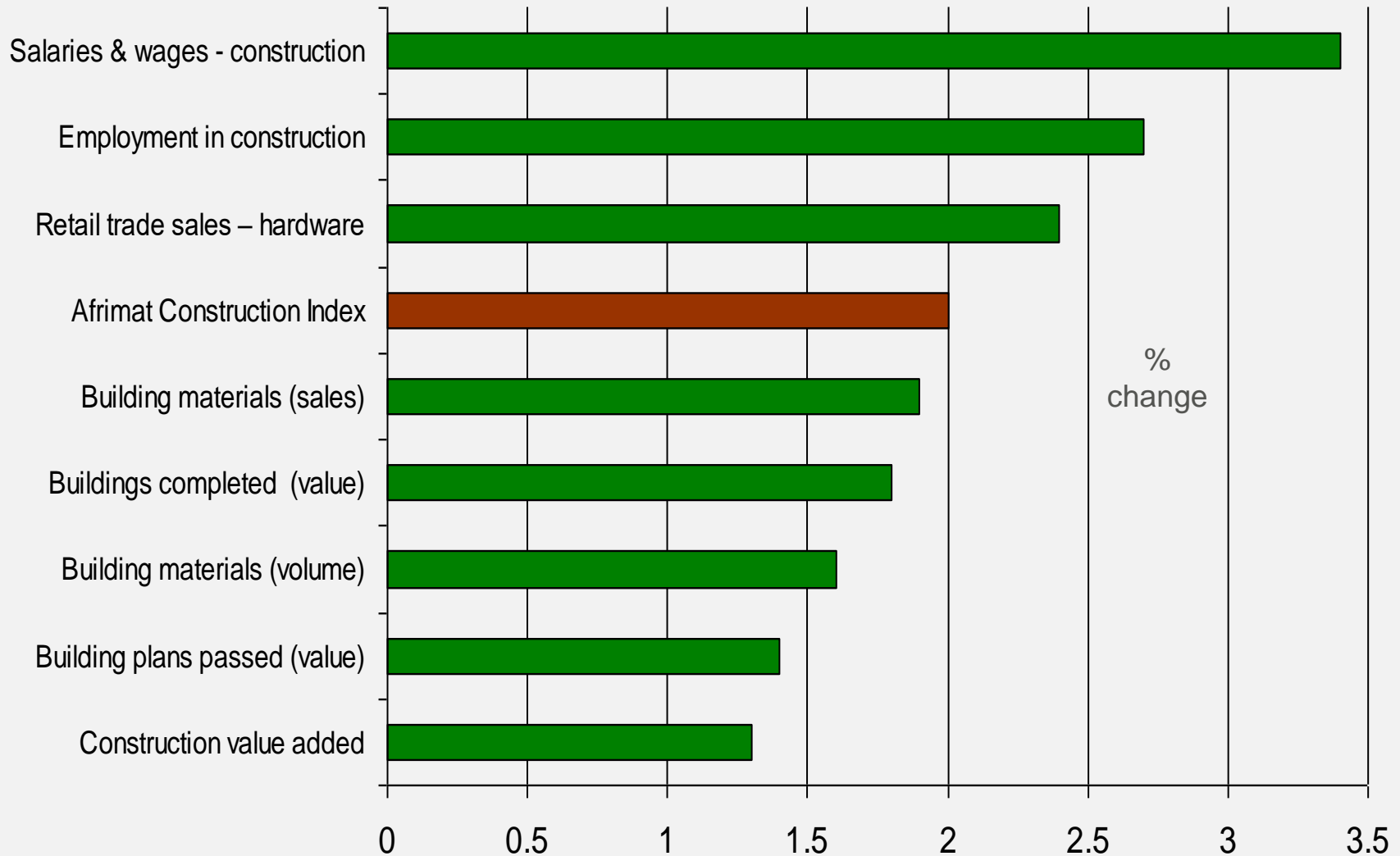


Capital formation by government, SOEs and the private sector

(Source: SARB)



Average annual increases in the Afrimat Construction Index sub-indices since the base period in 2011

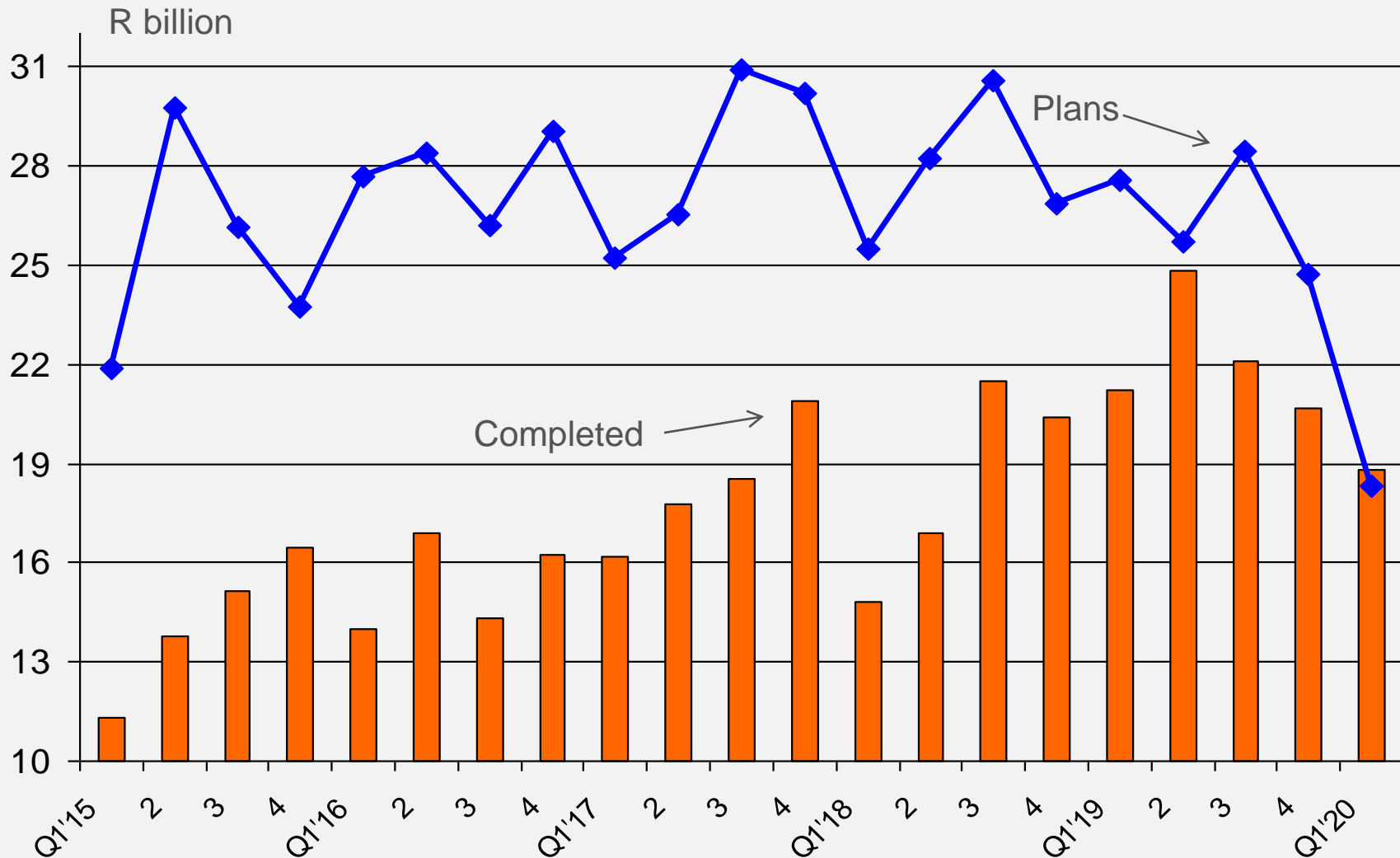


Value of building plans passed & buildings completed (current prices)



(Source: Stats SA)

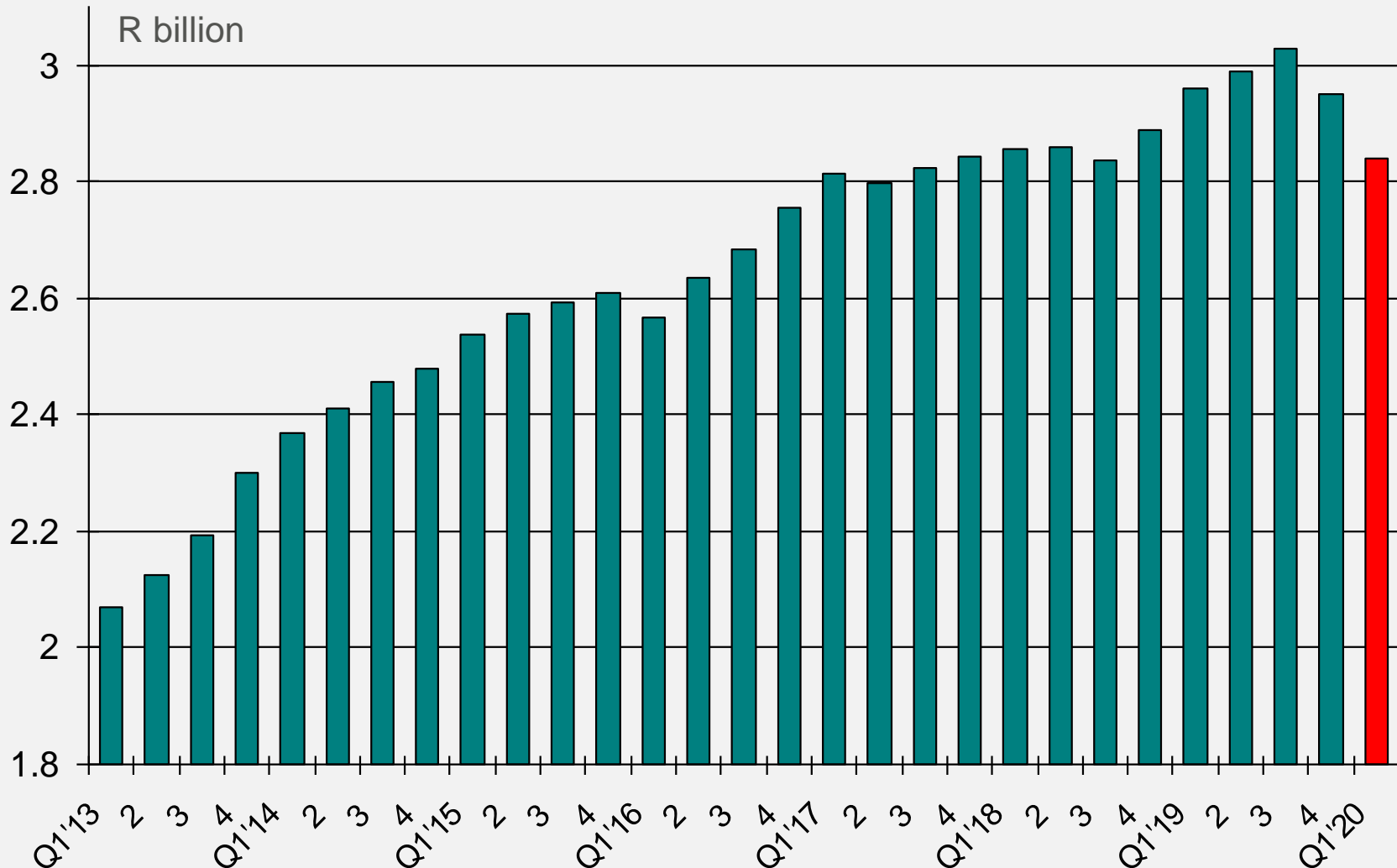
Note: Q1'20 includes estimates for March



Quarterly sales values – building materials (at current prices)



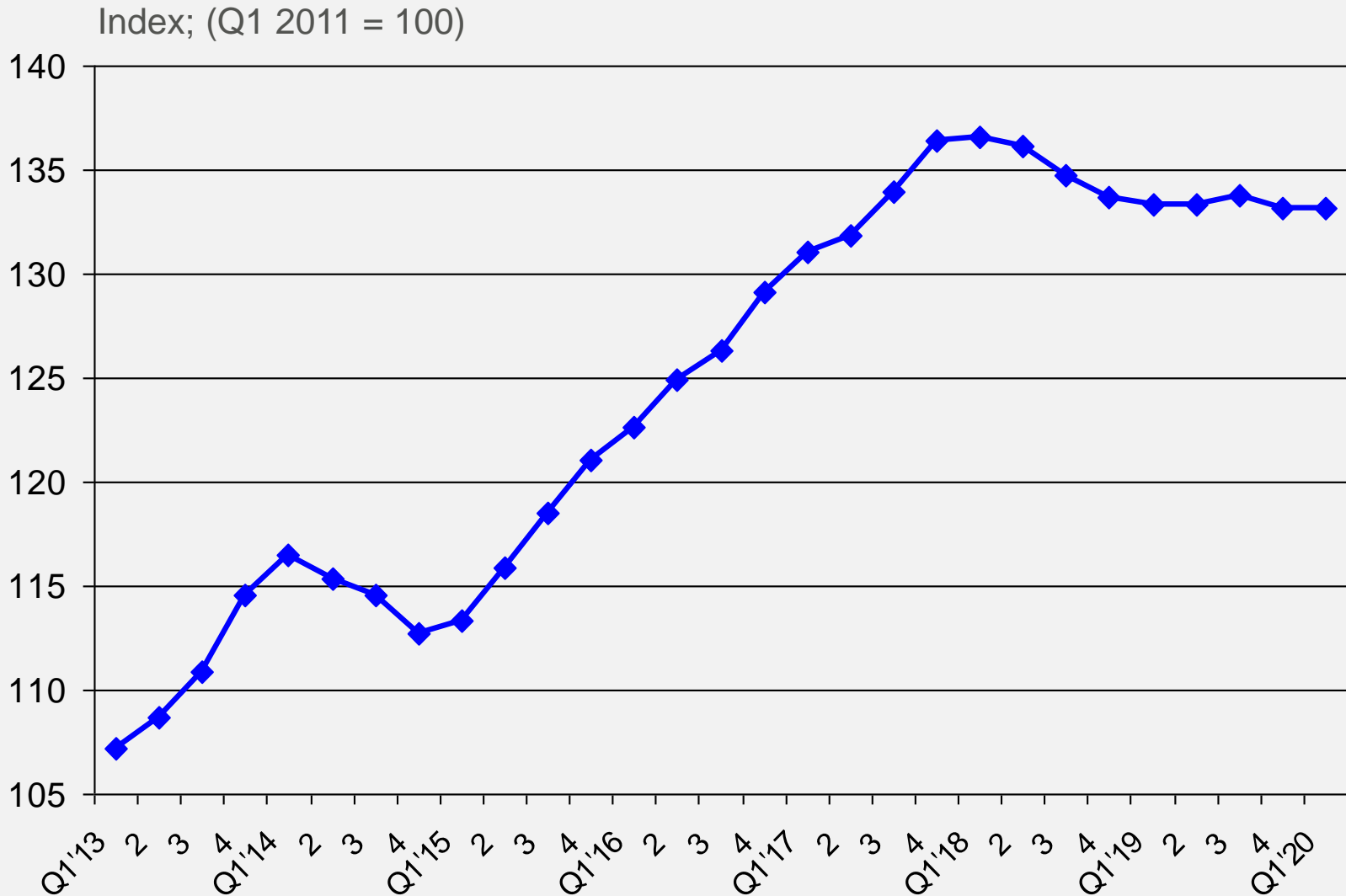
(Note: 4Q moving avg; Source: Stats SA)



Quarterly index of real hardware retail sales

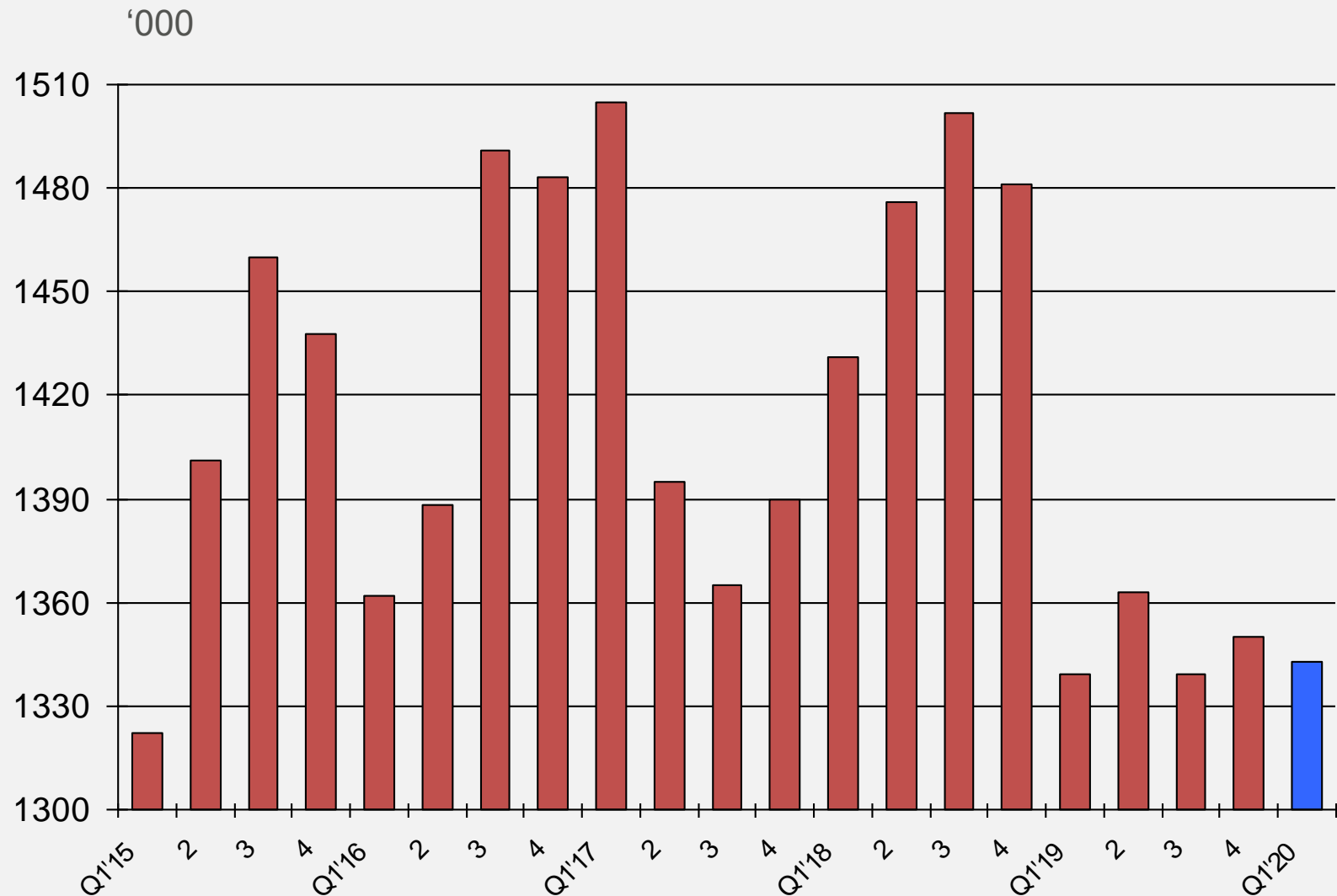


(Note: 4Q moving avg; Source: Stats SA)



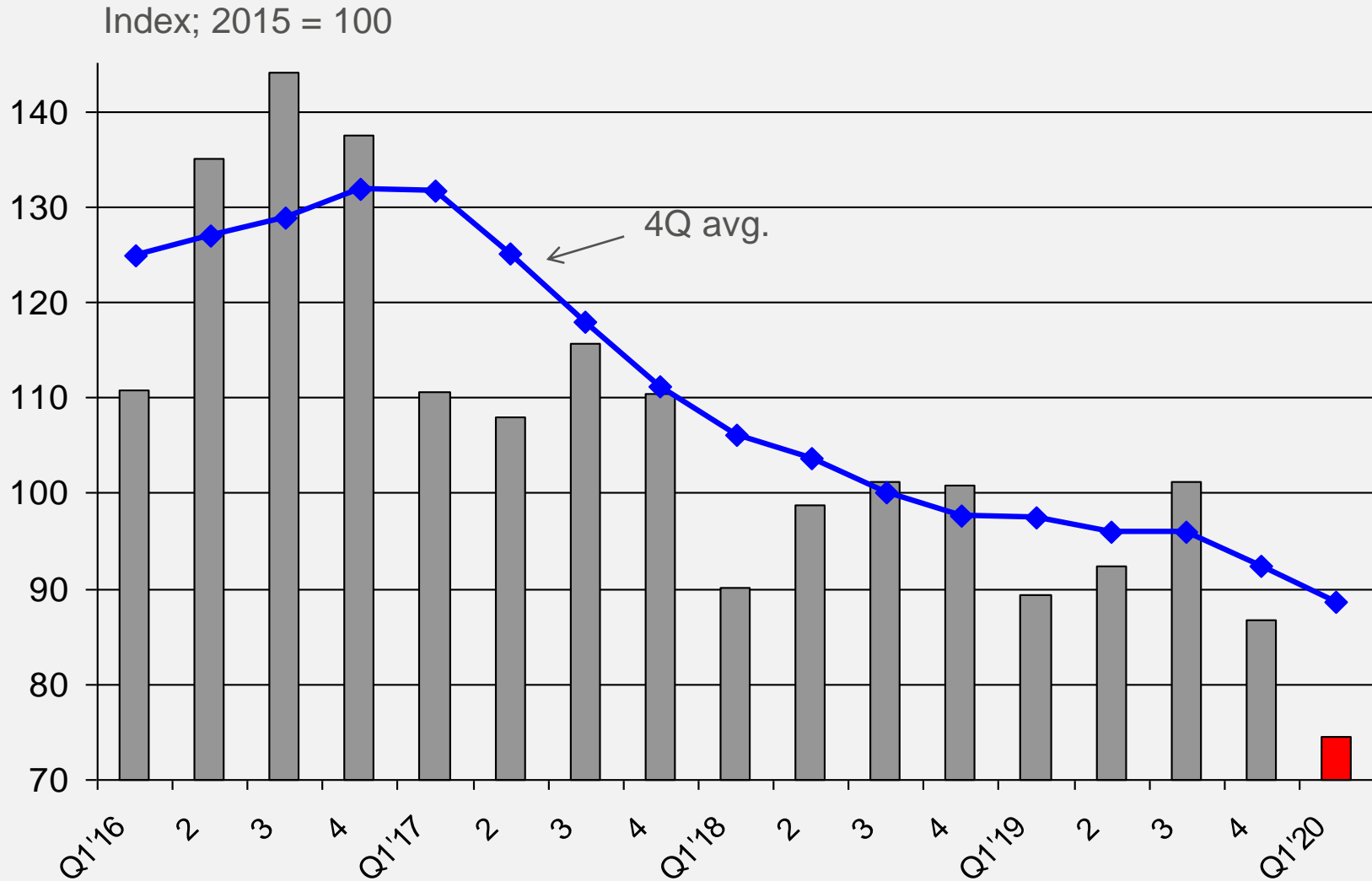
Employment in construction

(Source: Stats SA)



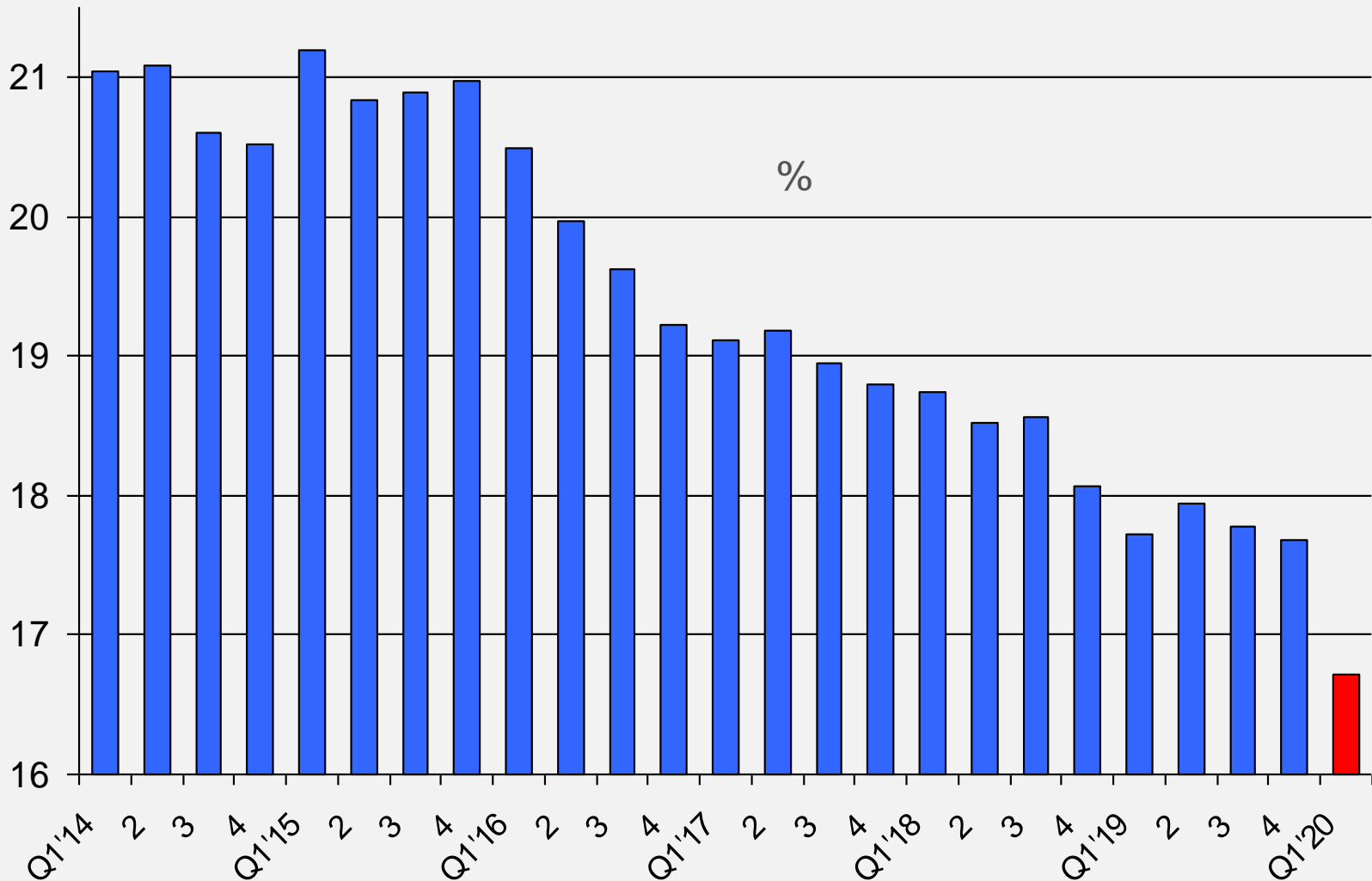
Index of the volume of building materials produced

(Sources: Stats SA; own calculations)



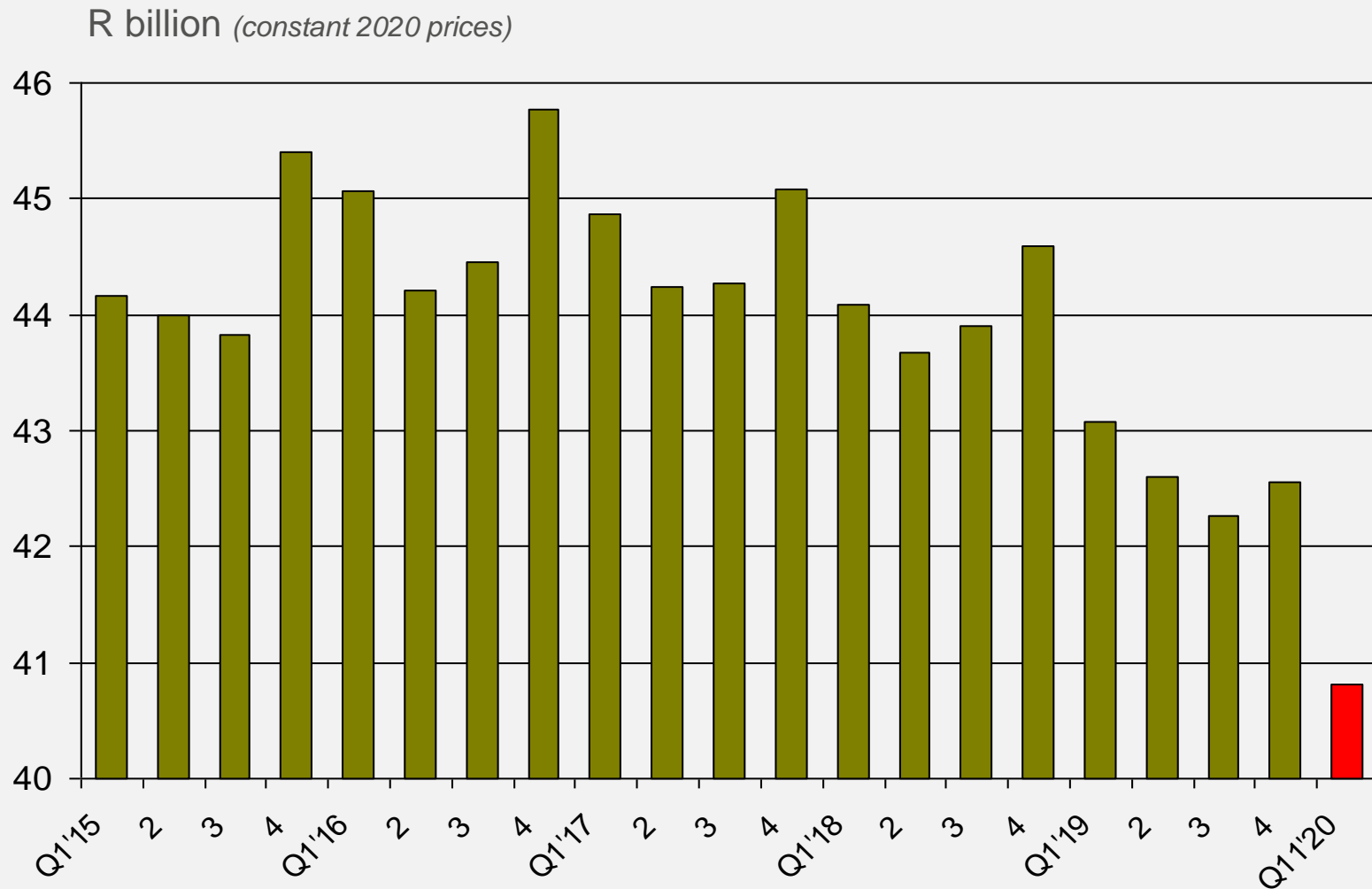
Capital formation as % of GDP in structural decline

(Sources: Stats SA; own calculations)



Real value added by the construction sector also in structural decline

(Source: Stats SA)



Prime overdraft rate



(Source: SARB)

